

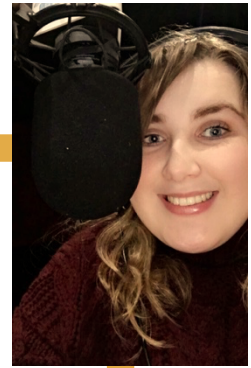
ELLEN MACLEOD

Twitter / IG: @EllenDoesRadio — FB: Ellen Hoban Macleod

Monday – 12-1pm producing on The Vault, 4-5pm presenting on Ellen Not DeGeneres. "Single Friend Does Dating" podcast.

First year BA Television & Radio

"Bloody brilliant at what she does."



A BIT ABOUT ME

Hiyaaa! First of all I'd like to thank you for having a nosey at my manifesto, as I know there's a lot of really impressive ones – and after having a gander myself, whatever the new committee ends up looking like I'm SO looking forward to spending my next year at Shock Radio. Anyway, if you don't know me already, I'm Ellen (Not DeGeneres), and I might well have ran over your toes by accident (probably) at some point. Sorry about that, by the way. If you know anything about me, you should know that I've been obsessed with radio since I was about 10. I'd been looking forward to University Radio wayyyy before even starting to apply to Uni, and this year at Shock has surpassed my expectations! From producing 2 of my best friends' shows (even though one of them only lasted for about a week – yikes), to having my own show and being able to impose my (sometimes questionable) music taste on everyone – it's been a ball, all thanks to our Shock family. So thank you all very much for making my first year great. Right, that got cringe. Let's swiftly move on.

WHY I SHOULD BE YOUR HEAD OF EVENTS

The next position on committee that I want to run for is the head of events. Now, I'll admit – I'm probably an unexpected candidate for this one as I'm not the type to go clubbing, and that's primarily what the head of events is in charge of. However, I am always up for a good party! Due to my physical disability and me being an electric wheelchair / walker user, night clubs aren't really my scene because of accessibility implications I'm sure you can appreciate. Students will be students, and students (being the students they are) want to go out to night clubs. I get that, I would love to join you at night clubs – if we could find those that were accessible. From the top of my head, I can think of at least 2 current Shock members that are in a wheelchair. Surely, if we're going to call it a society social, the whole society should be able to attend? There's been a couple of situations this year where I've headed along to a social, and then when people realized I wanted to go out with the rest of Shock plans have had to be changed last minute. Plus, not everyone actually likes nightclubs. Yeah, the majority of the society do and I get that, but there's so many more things we could do as a society that are way more inclusive. I think I should be your head of events so that I can make our socials more accommodating, and inclusive to every Shock member.

JUST TO SAY...

I am so looking forward to next year, and hopefully being able to organize some fabulous socials for you! It would be an absolute honour to get any of the committee positions that I'm running for, and represent our Shock Family.